



Co-funded by  
the European Union



Schweizerische Eidgenossenschaft  
Confédération suisse  
Confederazione Svizzera  
Confederaziun svizra

## Deliverable No. D2.2

# Dynamic WLI database - first version

Project acronym:

**SWIFT**

Project title:

# Supporting Women-led Innovation in Farming and Rural Territories.

Grant agreement No:

**101084561**



## Document Information

<b>Work Package Task</b>	WP2 –Task 2.5. Establishing a dynamic database of women-led innovations
<b>Deliverable title &amp; number</b>	Deliverable D2.2 – Dynamic WLI database - first version
<b>Due date</b>	28.02.2025
<b>Submission date</b>	28.02.2025
<b>Dissemination level</b>	SEN
<b>Deliverable type</b>	Report
<b>Lead Beneficiary</b>	BOKU
<b>Authors</b>	Barbara Stadlmayr, Stefanie Lemke, Charlotte Voigt, Francesco Panié, Joanna Bourke Martignoni, Larissa Da Silva Araujo, Margret Muller, Marta Rivera Ferre
<b>Reviewers</b>	All WP leaders
<b>Version</b>	1.1
<b>Status</b>	Active

Version 1.1  
28 February 2025

HISTORY OF CHANGES					
Version	Publication date	Changes	Task owners	Reviewers	Dissemination level
1.0	28.2.2025	<ul style="list-style-type: none"> <li>Initial version submitted to project consortium</li> </ul>	<ul style="list-style-type: none"> <li>Stefanie Lemke, Barbara Stadlmayr (BOKU), Francesco Panié (CIC)</li> </ul>	<ul style="list-style-type: none"> <li>All WP leaders</li> </ul>	<ul style="list-style-type: none"> <li>Sensitive</li> </ul>

## Disclaimer

Any dissemination of results reflects only the author's view and the European Commission is not responsible for any use that may be made of the information it contains.



# Table of contents

**Objectives and Process for Establishing the Dynamic Database ..... 4**

**Initiatives for feminist agroecological futures: External space..... 7**

**Initiatives for feminist agroecological futures: Internal space ..... 13**

**Conclusion and next steps..... 13**



## Objectives and Process for Establishing the Dynamic Database

### Task and Deliverable description as per grant agreement

(SWIFT, 2022, Grant Agreement Project 1010845, Annex 1, Description of action: page 10, 23, 25)

Task 2.5. Establishing a dynamic database of women-led innovations (M12-M48).

Deliverable D2.2 – Dynamic WLI database – first version.

Lead: BOKU. Co-lead: CIC. Participants: IHEID, ECVC, CSIC, UVIC-UCC.

The database (D2.2, D2.6) will be informed by research conducted in WP2 and also WP3 (through interactive formats that engage WLI, documenting all processes and co-developing materials in WP3) as well as by informal existing networks (women's agroecology networks in Spain) and ECVC, that will actively search for relevant WLI within their member organizations. This will serve as a repository of the innovations, but also as a dynamic place with user-friendly interface from where information and ideas can be shared with different audiences. This will be hosted in the SWIFT portal, WP6, Task 6.2. To develop this dynamic database there will be regular exchanges of WP2 with all other WPs.

### Process of collective decisions to establish the dynamic database - initial considerations

Starting at the end of 2023 and continuing throughout 2024, several meetings took place (19.12.2023, 12.2.2024, 26.2.2024, 22.3.2025) with the participants (BOKU, IHEID, ECVC, CIC, CISC/UPV) in task 2.5. The aim was to decide on a realistic implementation of the database, and to identify how the database could be integrated into the SWIFT portal. Discussion points included, among others: what should the portal include and how should it function?; which information should be included in the database and which information in the portal to avoid duplication; what is technically feasible for uploading information?; what is the purpose of the database and who is the target audience?; how to exchange data and how to make it relevant for women led innovations? Discussions also focused on ethics, information maintenance and uploading. Ethics doubts were consulted to the ethics external advisor.

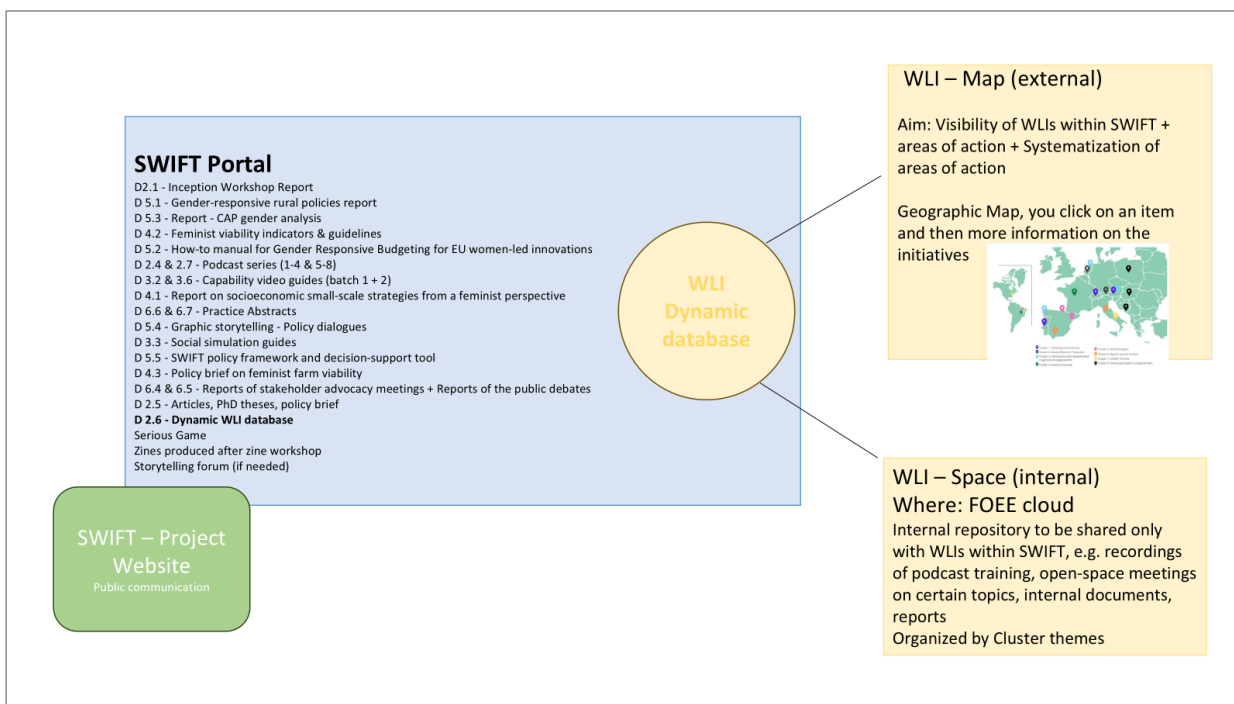


Figure 1 Draft Visualization of WLIs database and its relation to the portal and website

In addition, the necessity for a distinction between the website, portal, and database was discussed and the following decisions were taken:

- The database is an integral part of the portal and serves as a repository of innovations and an inspiration for new initiatives. It should have an external and an internal space.
- To visualize the initiatives in SWIFT as well as other groups working on similar issues that are not part of the SWIFT consortium, a geographic map will be designed, presenting the initiatives, including a short summary of the organization, a link to their website(s), area of action and key documents. Consent will be obtained from the organizations to upload their information on the map.
- An internal repository has been created using a Friends of the Earth (FOEE) cloud folder, allowing initiatives to securely share information that is not intended for public access. This includes presentations and recordings of Exchange formats (WP3, Task 3.1) and communication trainings (e.g., podcasts and participatory video webinars), as well as videos/capability guides shared exclusively within the SWIFT network.



### Process of collective decisions to establish the dynamic database – implementation

1. To implement an external geographic map, templates were prepared in an Excel file and available information about the WLIs from the SWIFT website was compiled and shortened. Missing information e.g. on logos, key documents or photos was highlighted. The information, together with an example of a map, were shared with the WLIs for feedback. Consent was obtained from all initiatives to be represented on the map.

2. For those WLIs where information was missing on the SWIFT website, an online survey was prepared to easily gather all the information.

3. At our second SWIFT consortium meeting in Geneva in November 2024, the initial map was presented during a specific session dedicated to developing and advancing the SWIFT portal, with the purpose of sharing it with the WLIs for feedback and brainstorming. Among other topics, reflections focused on what would be a preferred name for the database that everyone could identify with, a name that would resonate more with what the WLIs stand for. Suggestions were gathered an online survey was prepared and shared with the initiatives after the Geneva meeting to prioritize a name or suggested alternative names.

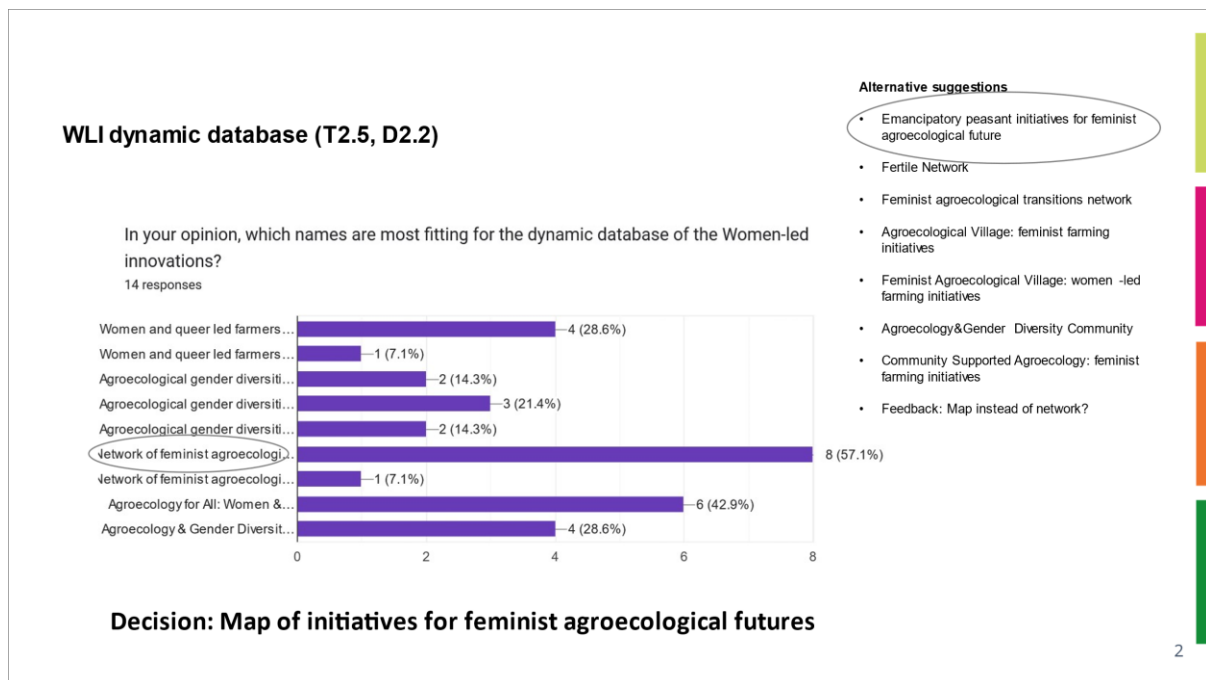


Figure 2 Renaming of dynamic database



The results were shared with the SWIFT consortium and the WLIs and the collective compromise resulted in renaming the “ WLI Dynamic database” **Initiatives for feminist agroecological futures.**

## Initiatives for feminist agroecological futures: External space

The map will be accessible via the SWIFT Portal. On the portal page a description of the map will be added, next to the link. On the SWIFT Portal page we will include a short paragraph about the methodology for building the map including selection criteria for inclusion (e.g. that the map is dynamic and partial, consent is obtained for inclusion, and a contact point is available for inquiries or data removal.). Here's the current link to the map.

**Link** <http://u.osmfr.org/m/1146935/>

### Start page

Provides an overview of all initiatives in SWIFT at the moment and their geographic location

- Different icon colours refer to the different areas of action (e.g. access to means of production; access to training)
- The initiatives are divided by area of action and geographically (Figure 3)





Figure 3 Start page

### Search function, data browser, legend

On the left side are icons with different functions:

1. Overview of all initiatives and geographic location (Figure 4)
2. Overview of area of actions and colour coding (Figure 5)
3. Filter option for initiatives per area of action (Figure 6)



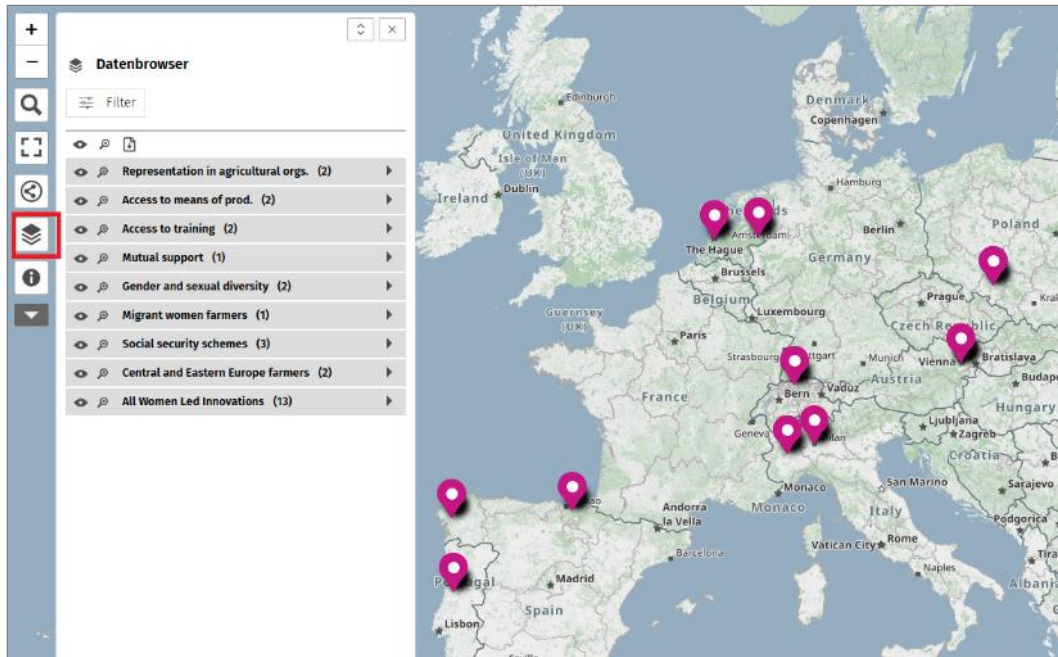


Figure 4 Overview of all initiatives and geographic location

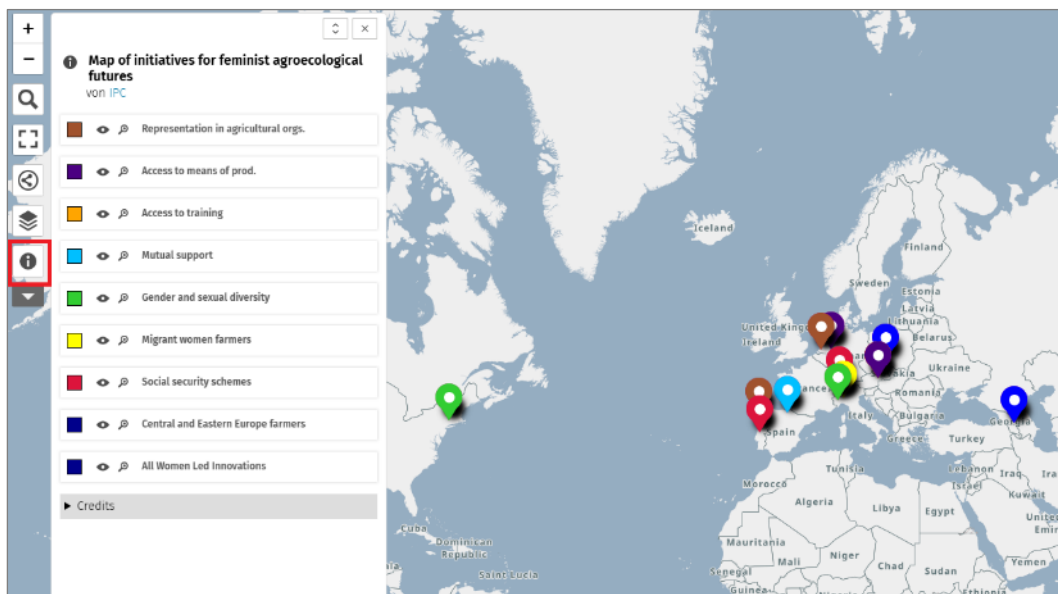


Figure 5 Overview of all areas of actions and colour coding

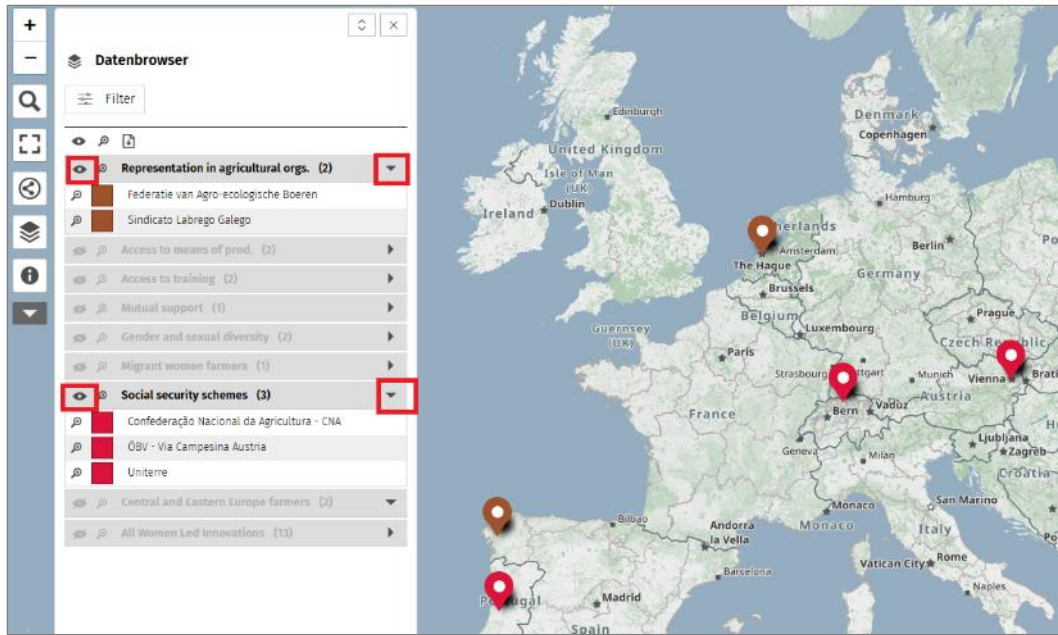


Figure 6 Filter option for initiatives per area of action



### Example of Individual initiatives on the map

The initiatives are presented with a short description of their work, a link to their website, key areas of action and links to important documents. Below are some examples:

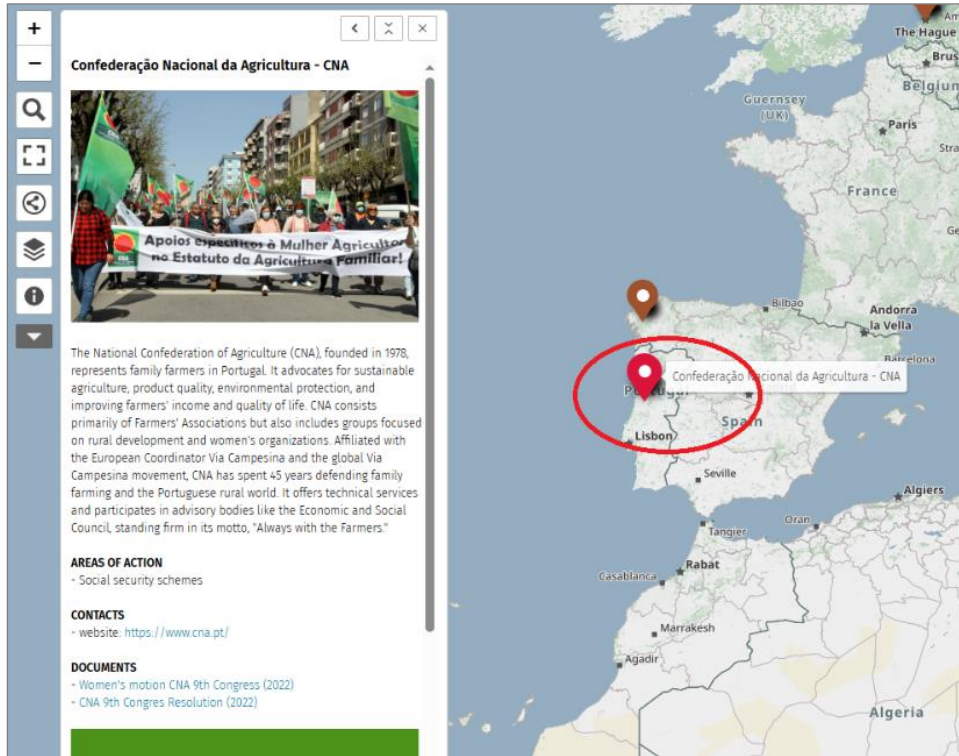


Figure 7 Presentation of individual initiatives – Example I

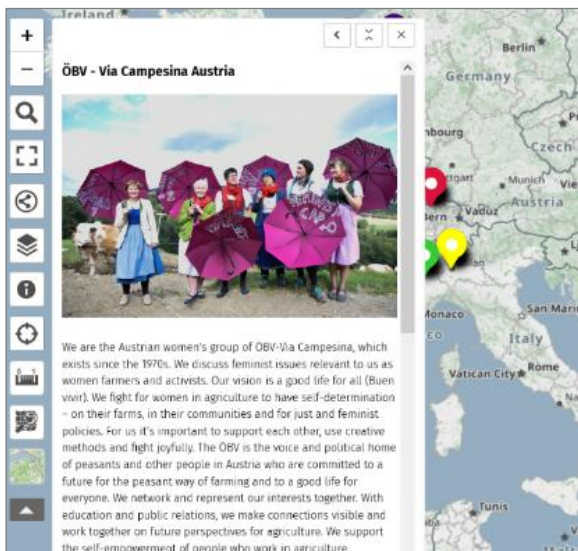


Figure 8 a) Presentation of individual initiatives - Example II      Figure 8 b) Presentation of individual initiatives - Example II



## Overview of initiatives currently presented on the map

Currently, the map presents initiatives that have partnered with SWIFT from the start and are part of the SWIFT Consortium. However, as the map is a dynamic space, we aim to expand it to include other initiatives working on similar themes.

WLI Name	Country	Area of action
ÖBV (Österreichische Berg- und Kleinbäuer_innen Vereinigung)	Austria	Social security schemes Access to means of production Access to training
CNA (Confederação Nacional da Agricultura)	Portugal	Social security schemes
Toekomstboeren	Netherlands	Access to means of production
SWITZ (Uniterre)	Switzerland	Access to means of production
SLG (Sindicato Labrego Galego)	Spain, Galicia	Participation/Representation in agricultural organizations
De Federatie van Agro-ecologische Boeren	Netherlands	Participation/representation in agricultural organizations
SOF Brazil (Sempre Viva Organizacao Feminista SOF)	Brazil	Access to training
Ehne-Bizkaia	Spain, Basque country	Mutual support
Bright Project	Italy	Migrant women farmworkers
Rock Steady Farm	US	Gender and sexual diversity
Cascina Malerbe	Italy	Gender and sexual diversity
APLAB (AgroPermaLab)	Poland	Central and Eastern European farmers
World March of Women	Georgia	Central and Eastern European farmers Access to training
Jornaleras de Huelva en Lucha*	Spain	Migrant women farmworkers
MST Brazil*	Brazil	Gender and sexual diversity

\*not on the map yet, but will be added, as soon as complete information is available



## Initiatives for feminist agroecological futures: Internal space

An internal repository was created on the Friends of the Earth (FOEE) cloud, allowing initiatives to securely share information not intended for public access. This includes presentations and recordings of Exchange formats (WP3, Task 3.1) and communication training (e.g., podcasts and participatory video webinars), as well as videos/capability guides shared exclusively within the SWIFT network.

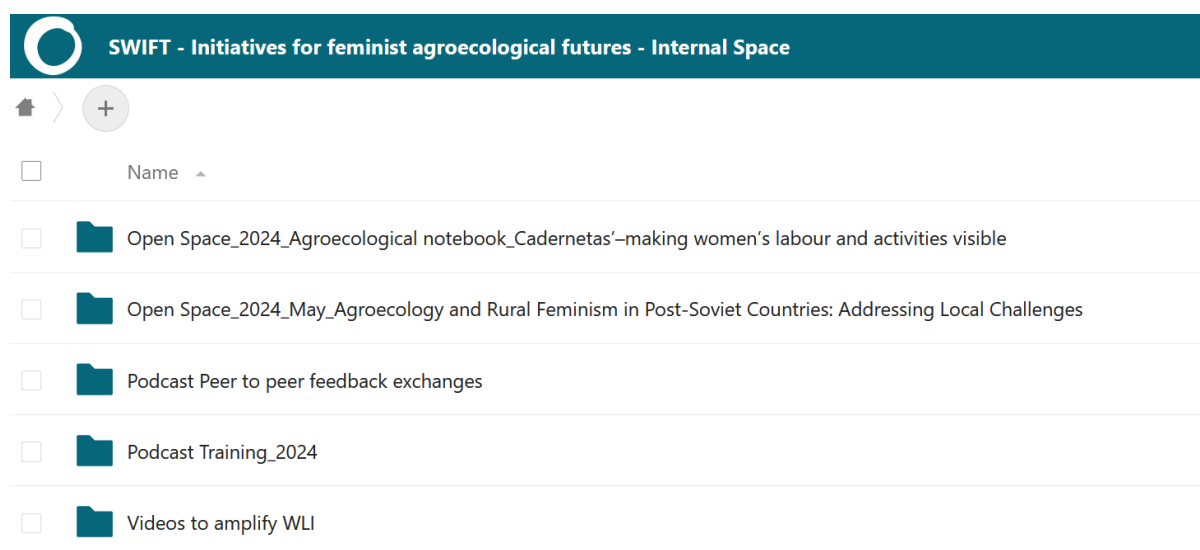


Figure 9 Internal Space

## Conclusion and next steps

The database has been implemented as a geographic map which will be linked to the SWIFT portal. The map visualizes initiatives by area of action, providing summaries, website links, and key documents. Additionally, an internal FOEE cloud folder ensures secure sharing of non-public materials of the initiatives such as presentations, recordings, and training resources. The Map of initiatives for feminist agroecological futures will also be available in Spanish and French. Information is currently translated and will be online in April 2025. The map is a dynamic space and we plan to expand it over the course of the project, to include other initiatives working on similar themes.